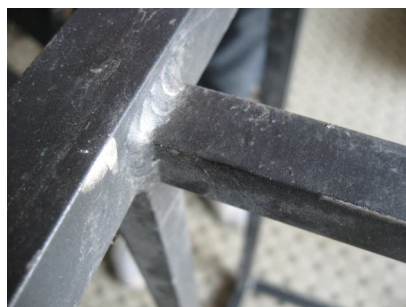


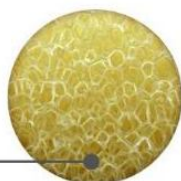
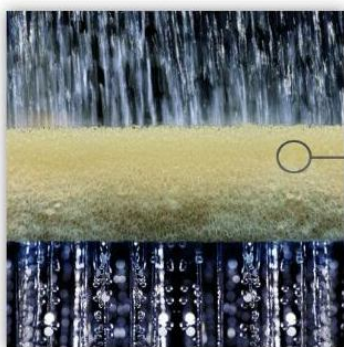


www.wakinoutdoorliving.com

- Full welded aluminium frame



- High density softer cushion foam/quick dry foam



Quick Dry Foam

- Quick dry
- High density
- Chemical treated
- Mould-resistant

- Sunbrella/Sunproof and high quality Olefin cushion fabric



WAS-001



WAD-001



WAD-002



Toledo

WAW-3178EXT ALUM./PS WOOD EXTENSION TABLE
Size: 200/300X100X75cm

WAT-4455 ALUM./SLING ARMCHAIR
Size: 57,5X55X91cm

WAD-003



Queensland

WAG-3564EXT ALUM./ GLASS LIFT UP TABLE
Size: 180/240X100X75cm

WAT-4442 ALUM./ SLING CHAIR
Size: 65X47X88cm

WAB-001



WAT-001



WAT-002



WAC-001



WAC-002



WAC-003



WAC-004



WAC-005



WAC-006



PILLOWS AND CUSHION



CONNECTORS FOR MODULEAR SOFA



Warmly welcome to send us inquiry to ask an quotation.

Inquiry email: info@wakinoutdoorliving.com

Whatsapp:0086-15920324895

Head Office:NO.2 MINLONG INDUSTRIAL ZONE, DURUAN NORTH 3RD ROAD,
PENGJIANG DISTRICT, JIANGMEN CITY, GUANGDONG PROVINCE

